

# RURAL TREASURES

# COFFEE **TABLE** BOOK

**PRODUCTS OF SHGS**  
NAGALAND STATE RURAL LIVELIHOODS MISSION

# RURAL TREASURES





COFFEE TABLE BOOK  
PRODUCTS OF SHGS  
NAGALAND STATE RURAL LIVELIHOODS MISSION

All rights reserved

Copyright © Nagaland State Rural Livelihoods Mission (NSRLM)

Directorate of Rural Development  
Government of Nagaland  
New Secretariat Road, Kohima-797001  
Nagaland, India  
www.nsrlm.nagaland.gov.in  
Email: mdnsrlm@gmail.com  
Phone: 0370-2270141



-  Nagaland State Rural Livelihood Mission
-  NSLRM2
-  nagalandsrlm
-  Nagaland SRLM

Volume 1

Published in August 2022

Design and Printed at Logic Art, Dimapur  
Photography by Manoj Sagolsem

# RURAL TREASURES

Nestled in the picturesque and mystic mountains of North East Region of India, Nagaland is home to untapped treasures of vibrant & intricate handlooms, handicrafts, traditional jewelry, artefacts, home décor and traditionally grown food products. Every household is deeply involved in or more of these activities. This is more prevalent in the rural households of Nagaland, which comprises of over 70% of the total State households. And it is this very powerhouse that Nagaland State Rural Livelihoods Mission, the implementing agency of Deen Dayal Antyodaya Yojana-National Rural Livelihoods Mission, has been working closely with since 2013 through its rich network of 12000 women Self Help Groups and their federations and collectives. Each curated product has a compelling story to tell, a story of inspiration, of victory against all odds, and of aspiration to bring an appreciable change in their households and their community. Through this Coffee Table Book initiative, the State Mission continues to foster their spirit of resilience and their aspiration for an empowered sustenance.

# Dimapur Cluster

District Mission Management Unit (DMMU), NSRLM  
District Rural Development Agency, DC Court,  
Dimapur - 797112, Nagaland  
Email: adpmdmp@gmail.com



## Isali Muru, Karela Pickle

Ingredients : Karela, pickle powder, garlic, ginger, chilipowder, kingchili, salt, mustard oil  
Net weight : 300 gm  
MRP : Rs.100  
Pukhato village, Kuhuboto



**Isali Muru, Bitter eggplant pickle**

Ingredients : Bitter-egg plant, mix masala, garlic, ginger, chillipowder, salt & mustard oil.  
 Net weight : 200 gm  
 MRP : Rs.100  
 Pukhato village, Kuhuboto



**Isali Muru, Bamboo shoot pickle**

Ingredients : bamboo shoot, pickle powder, garlic, ginger, king chili, salt & mustard oil  
 Net weight : 200 gm  
 MRP : Rs. 100  
 Pukhato village, Kuhuboto



**Isali Muru, Naga King chili pickle**

Ingredients : Fresh king chili, pickle powder, garlic, ginger, salt & mustard oil  
 Net weight : 300 gm  
 MRP : Rs. 100  
 Pukhato village, Kuhuboto



**AN's Homemade Karella Krackle**

Ingredients : Bitter gourd, turmeric, salt, vegetable oil  
 Net weight : 100 g  
 MRP : Rs.120  
 Name : Anung Padumpukhuri, Chumukedima



**(i) AN's Home Made Dry Fish (small) pickle**

Ingredients : Dry fish, Chili, Ginger, Garlic, Mustard oil, Salt, sesame seed, mix masala  
 Net weight : 120 g  
 MRP : Rs.100  
 Name : Anung Padumpukhuri, Chumukedima

**(ii) AN's Home Made Tomato & Tamarind pickle**

Ingredients : Tamarind, Tomato, Chilli, Garlic, Oil, Salt  
 Net weight : 120 g  
 MRP : Rs.100  
 Name : Anung Padumpukhuri, Chumukedima





**M/s- Rhakho, Food Products Local Banana Chips**

Ingredients : Sliced Banana, Refined Oil, Salt  
 Net Weight : 150g  
 MRP : Rs. 120/-  
 JiitiKro SHG, Bade Village Dhansiripar Block



**Ms. NmN, Dried Moringa Leaves**

Ingredients : Moringa Leaves (sun dried)  
 Net Weight : 100g  
 MRP : Rs. 50/-  
 ThukepeluoKro SHG, Bade Village Dhansiripar Block



**Seyie noodles**

Ingredients : Wheat flour, eggs, salt  
 Net weight : 400 g  
 MRP : Rs.50  
 Seyie SHG Tenjiphe I, Chumukedima



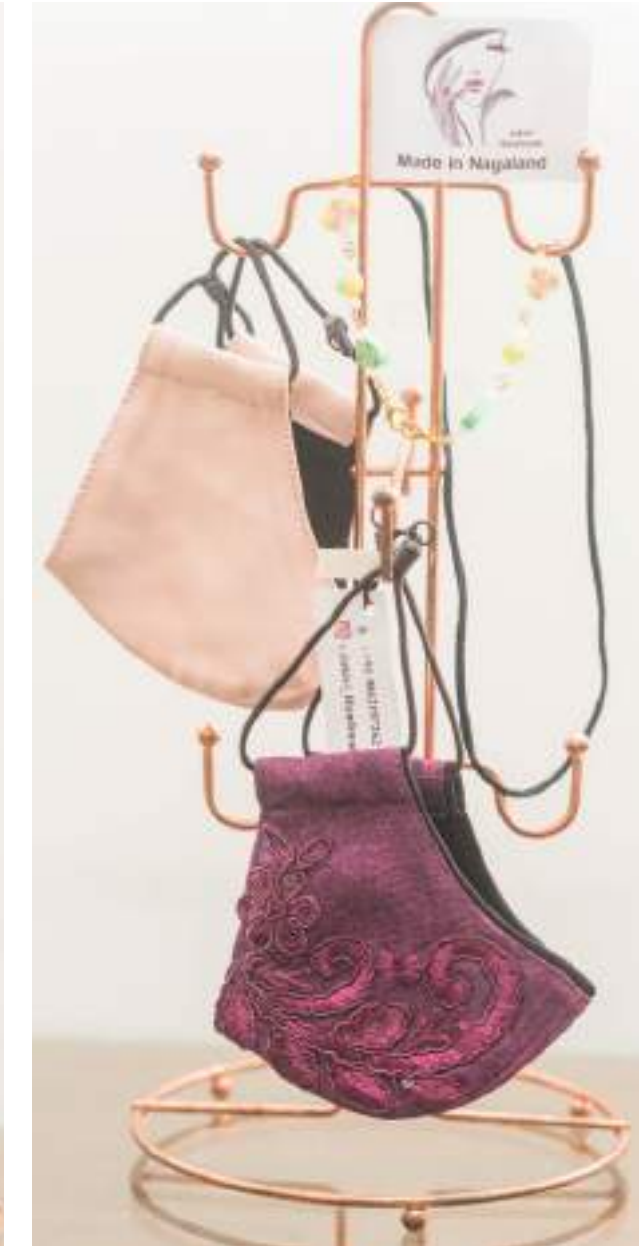
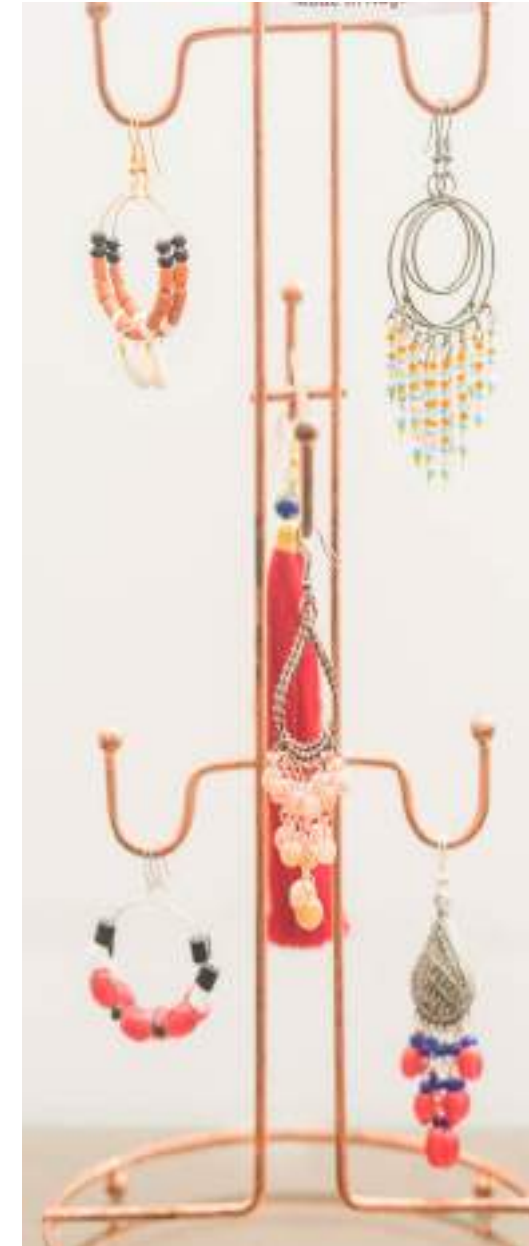
**AN's Homemade Kitchen rags set (Hand towel & Pot holder)**

Net weight : 10 gm  
 MRP : Rs. 250  
 Name : Anung  
 Padumpukhuri, Chumukedima



**Vilholi, Cultural bracelet Arm band**

Product details : seashell beads, woven yarn  
 MRP : Rs. 500 (per piece)  
 Kili SHG, Kiyeto village Dhansiripar block



**Jukivi Handmade Earrings**

Product details : Beads, tar, brass  
 MRP : Rs. 150-200  
 (depending on size)  
 Ikishe village, Chumukedima

**Jukivi Handmade Face mask & holders**

Product details : Face mask (cotton material, lace & memory wire) / Mask chain (small, beads, memory wire & hooks)  
 MRP : Rs. 150-200(facemask) / 100-150 (mask chain)  
 Ikishe village, Chumukedima



**Jukivi Handmade Traditional necklace**

Product details : glass beads, thread, seedbeads.  
 MRP : Rs. 2500  
 Ikishe village, Chumukedima



**Jukivi Handmade Traditional necklace**

Product details : Small beads, Thread & brass  
 MRP : Rs. 350  
 Ikishe village, Chumukedima



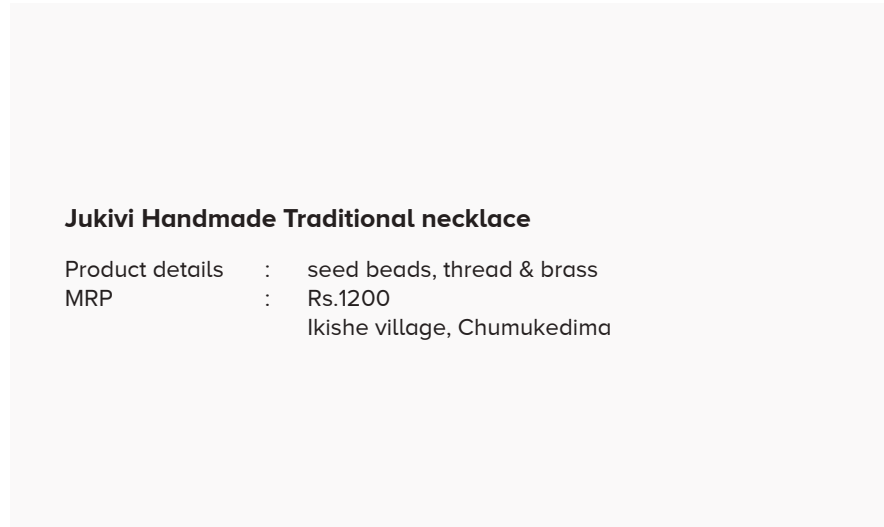
**Neisasienuo H Keyho, Traditional Photo Frame**

Product details : Wood, Glass, oil paint  
 MRP : Rs. 3000  
 Sezo Kro SHG, Bade Village  
 Dhansiripar Block



**Neisasienuo H Keyho, Traditional necklace vase pot**

Sezo Kro SHG  
 Product details : Cement pot, oil paint  
 Bade Village, Dhansiripar Block  
 Traditional Clay Vase - Rs. 2500/-



**Jukivi Handmade Traditional necklace**

Product details : seed beads, thread & brass  
 MRP : Rs.1200  
 Ikishe village, Chumukedima





**Kaghali Mirrors, Wall décor mirror**

Description: Perfect for placing in an entryway, living room, bedroom, or bathroom, this contemporary mirror fits in beautifully with your existing decor featuring a modern frame in your choice of finish, the mirror not only provides a functional purpose but adds a sophisticated element to any space.

Product Details : Glass, Nylon & Cotton.  
 Net Weight : 150 Grams  
 MRP : Rs. 350  
 UNITY SHG, Hekheshe Village, Medziphema Block



**Basket (Yellow and Maroon Colour)**

Product details : Yellow-Plastic wire; Maroon - Synthetic fiber)  
 MRP : Rs. 300 each  
 Yellow basket : Blessing SHG, Homeland Village, Aghunaqa  
 Maroon basket : Lumkhiung VLO, New Shouba Village, Nuiland



**Crochet shoes**

Product details : Fur soft yarn with rubber sole  
 MRP : Rs.300  
 Emathaokho SHG  
 Kuda Village, Chumukedima



**Crochet shoes**

Product details : Yarn crochet with rubber sole  
 MRP : Rs. 500  
 Thalm SHG  
 Chumukedima village, Chumukedima



**Crochet shoes**

Product details : Yarn crochet with rubber sole  
 MRP : Rs. 500  
 Thalm SHG  
 Chumukedima village, Chumukedima

# Kiphire Cluster

District Mission Management Unit (DMMU), NSRLM  
District Rural Development Agency  
Kiphire Town - 798611, Nagaland  
Email: adpmkpr88@gmail.com



## Basket

Products details : Plastic wire, yarn and thread Blue and white, blue and yellow colour  
Mrp : Rs. 500 each (big size)  
Yellow and red (medium size)  
Mrp : 350  
Tiakhala, Jasmine SHG, Nitoi village, Sitimi Block



**Wooden Tray**

MRP: Small : Rs. 100, Medium- Rs. 150, Large- Rs. 200  
 Tsusola, Solun SHG, Pungrungru Village, Kiphire Block

**Bamboo Baskets (Varieties of Naga Styled Bamboo Crafts)**

Materials : Bamboo, plastic wire  
 Mrp : 400 ( basket)  
 Mrp : 800 ( Carrying basket made of bamboo)  
 Mrp : 600 ( Rice Winnowing basket )  
 Lerenla, Yare Shg, Phuvkiu village, Pungro Block

**Woolen Bag with Multi-coloured Design**

Materials : Yarn, wool  
 MRP : Rs. 500  
 Leotingla, Akehta SHG, Kisetong Village, Kiphire Block

**Plastic Basket**

Materials : Plastic  
 MRP : Rs. 300  
 Yangtrisela, Akehta SHG  
 Kisetong Village, Kiphire Block

**Crochet Bag with Design**

Materials : Yarn/thread, wool  
 MRP : Rs. 500  
 Leotingla, Akehta SHG  
 Kisetong Village, Kiphire Block

**Crochet Bag with Multi-coloured Design**

Materials : Yarn/thread, wool  
 MRP : Rs. 500  
 Leotingla, Akehta SHG  
 Kisetong Village, Kiphire Block





**Traditional Sumi Mekhela for women**

Products details : bornali  
 Mrp : Rs. 4000  
 Inaholi, Mugha SHG  
 Thazuvi village, Sitimi Block



**Traditional Sumi Mekhela for women**

Products details : bornali  
 Mrp : Rs.4000  
 Inaholi, Mugha SHG  
 Thazuvi village, Sitimi Block



**Traditional Sumi Mekhela for women**

Products details : bornali  
 Mrp : Rs. 4000  
 Shikatoli, Anishe SHG  
 nitoi village, Sitimi Block



**Traditional Sumi shawl for women**

Products details : doli, thailand, twoply, and  
 bornali  
 Mrp : Rs. 2,500  
 Atobo, Anishe SHG  
 Nitoi village, Sitimi Block



**Traditional Yimkhiung Mekhela suits for women**

Products details : Doli  
 Mrp : Rs. 4000  
 Asula, Eluntsu SHG  
 Zhimtsuwong village,  
 Pungro Block



**Naga women's beaded Necklace**

Product Details : glass beads necklace with  
 multi coloured design  
 MRP : Rs. 1500  
 Yagnthrisela, Akehta SHG  
 Kisetong Village, Kiphire Block



**Traditional Yimkhiung Mekhela for women**

Products details : polyester  
 Mrp : Rs. 3000  
 M. Kamkheangla, SHG  
 Kumlun : Zhimtsuwong VILLAGE  
 Block : Pungro , Kiphire



**Traditional Sumi waist coat for men**

Products details : Thailand and shells  
 Mrp : Rs. 3000  
 Inaholi, Mugha SHG  
 Thazuvi village  
 Block Sitimi ,kiphire



**Sangtam Men's traditional muffer**

Product Details : doli, silk, nylone, Thailand,  
 two-ply, four-ply  
 MRP : Rs. 800  
 Athrongla, Kokri SHG  
 Longthonger village,  
 Kiphire Block



**Traditional women's Muffer**

Product Details : doli, silk, nylone, Thailand,  
 two-ply, four-ply  
 MRP : Rs. 800  
 Athrongla, Kokri SHG  
 Longthonger village,  
 Kiphire Block



**Naga women's beaded Necklace**

Product Details : glass beads necklace with multi coloured design  
 MRP : Rs. 600  
 Yagnthisela, Akehta SHG  
 Kisetong Village, Kiphire Block

**Naga women's beaded Necklace**

Product Details : glass beads necklace with multi coloured design  
 MRP : Rs. 600  
 Yagnthisela, Akehta SHG  
 Kisetong Village, Kiphire Block



**Turmeric powder**

Ingredients : Home grown Turmeric  
 Mrp : Rs. 80  
 Farmer SHG,Phuvkiu village  
 Pungro Block

**Home - Made organic Soap**

Ingredients used : soap base, coconut oil, olive oil, distilled water, 100 percent pure lye, essential oils, dried herbs or flowers  
 Mrp : Rs. 120 ( big )  
 Mrp : Rs. 100 ( medium)  
 Mrp : Rs.30 (small)  
 P. Tsusangla ,ANGPU SHG,  
 Pungro Village, Pungro Block



# Kohima Cluster

District Mission Management Unit (DMMU), NSRLM  
District Rural Development Agency  
Kohima-797001, Nagaland  
Email: adpmkhm@gmail.com



**TesuPhi (hand woven women's hand bags)**

Product detail : polyester yarn, shells.  
MRP : Rs. 900/-  
SHG name : Nye SHG  
Zisunyu village, Tseminyu



**TesuPhi (hand woven women's hand bags)**

Product detail : polyester yarn, shells.  
MRP : Rs. 900/-  
SHG name : Nye SHG  
Zisunyu village, Tseminyu



**Hand woven women's hand bags**

Product detail : polyester yarn.  
 MRP : Rs. 900/-  
 SHG name : Nye SHG  
 Zisunyu village, Tseminyu

**Hand woven women's hand bags**

Product detail : polyester yarn.  
 MRP : Rs. 900/-  
 SHG name : Nye SHG  
 Zisunyu village, Tseminyu

**Hand woven women's hand bags**

Product detail : polyester yarn.  
 MRP : Rs. 900/-  
 SHG name : Nye SHG  
 Zisunyu village, Tseminyu

**GUNDA KEJU (men's stole)**

Product Details : Traditional Rengma Tribe hand woven Stole using polyester threads & silk  
 MRP : Rs. 900/-  
 Name of Group : Nye SHG  
 Village : Zisunyu  
 Block : Tseminyu



**Tesu Phi (women's stole)**

Product detail : polyester yarn, shells.  
 MRP : Rs. 3000/-  
 SHG name : Nye SHG  
 Zisunyu village, Tseminyu



**Kerha (men's ornamental wear)**

Product Details : Traditional Rengma Tribe hand woven wear using wool & cotton  
 MRP : Rs. 2000/-  
 Name of Group : Nye SHG  
 Village : Zisunyu  
 Block : Tseminyu



**Nezen Miren (Men's waistcoat)**

Product Details : Traditional Rengma Tribe hand woven wear using polyester & silk  
 MRP : Rs. 3000/-  
 Name of Group : Nye SHG  
 Village : Zisunyu  
 Block : Tseminyu





**Rhikho (Men's waistcoat)**

Product Details : Traditional Rengma Tribe hand woven wear using polyester & silk  
 MRP : Rs. 2500/-  
 Name of Group : Nye SHG  
 Village : Zisunyu  
 Block : Tseminyu



**Ngada Miren (Men's waistcoat)**

Product Details : Traditional Rengma Tribe hand woven wear using polyester & silk  
 MRP : Rs. 3000/-  
 Name of Group : Nye SHG  
 Village : Zisunyu  
 Block : Tseminyu



**Rhikho (Men's shawl)**

Product Details : Traditional Rengma Tribe machine woven wear using polyester & silk  
 MRP : Rs. 1200/-  
 Name of Group : Nye SHG  
 Village : Zisunyu  
 Block : Tseminyu



**Jonyu Phi (Men's shawl)**

Product Details : Traditional Rengma Tribe hand woven wear using wool & cotton  
 MRP : Rs. 7000/-  
 Name of Group : Nye SHG  
 Village : Zisunyu  
 Block : Tseminyu



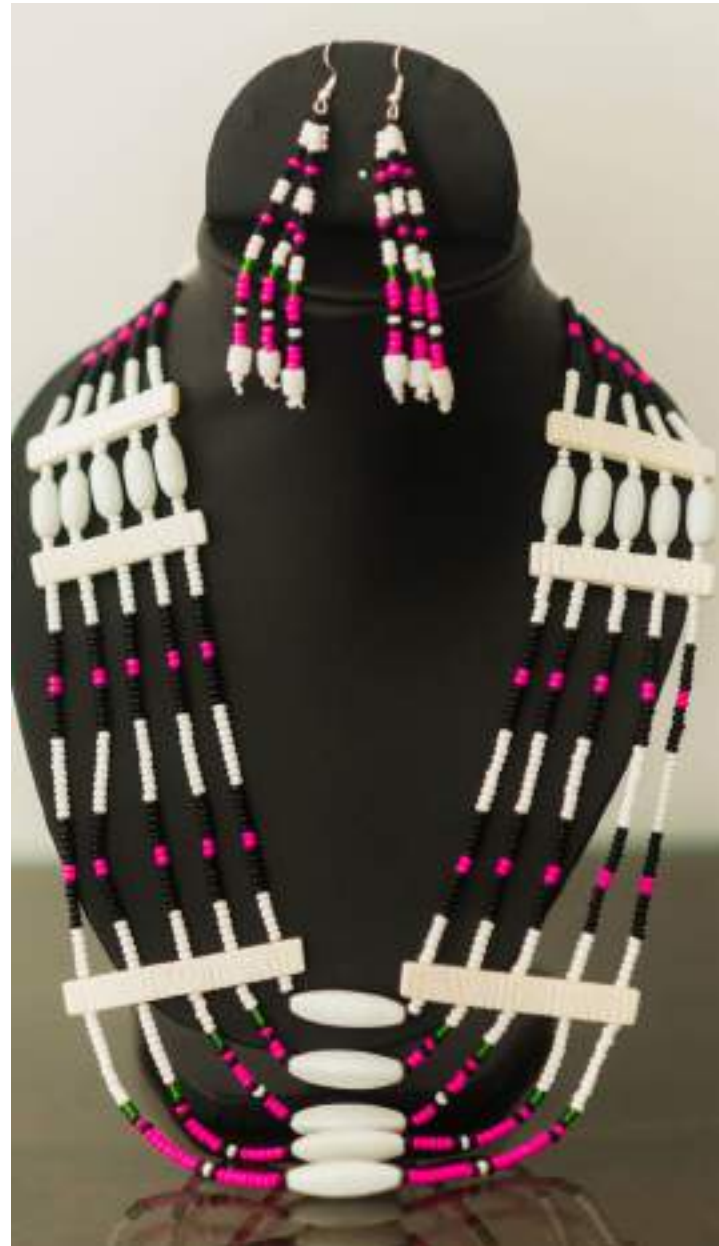
**Phiri suit (women's stole with wrap-around)**

Product Details : Traditional Rengma Tribe hand woven wear using polyester & silk  
 MRP : Rs. 5500/-  
 Name of Group : Nye SHG  
 Village : Zisunyu  
 Block : Tseminyu



**Phi Ketsi suit (women's stole with wrap-around)**

Product Details : Traditional Rengma Tribe hand woven wear using polyester & silk  
 MRP : Rs.3000/-  
 Name of Group : Nye SHG  
 Village : Zisunyu  
 Block : Tseminyu



**Nga Mhu (women's wrap-around)**

Product Details : Traditional Rengma Tribe  
hand woven wear using  
polyester & silk  
MRP : Rs. 4000/-  
Name of Group : Nye SHG  
Village : Zisunyu  
Block : Tseminyu

**Phiri (women's necklace)**

Product Details : Traditional Rengma  
Tribe using glass beads.  
MRP : Rs.700/-  
Name of Group : Nye SHG  
Village : Zisunyu  
Block : Tseminyu



**Tyu (women's necklace)**

Product Details : Traditional Rengma  
Tribe using glass beads.  
MRP : Rs. 150/-  
Name of Group : Nye SHG  
Village : Zisunyu  
Block : Tseminyu

**Tyu (women's necklace)**

Product Details : Traditional Rengma Tribe  
using glass beads.  
MRP : Rs.150/-  
Name of Group : Nye SHG  
Village : Zisunyu  
Block : Tseminyu



#### Gunda (men's necktie)

Product Details : Traditional Rengma Tribe using polyester yarn & silk.  
 MRP : Rs. 400/-  
 Name of Group : Nye SHG  
 Village : Zisunyu  
 Block : Tseminyu



#### Ane Kitchen

Product Details (left): monkey tree bean seeds, king chili powder, vinegar, salt, garlic, ginger, rice bran oil.  
 Product Details (right) : fermented bamboo shoot, king chili powder, vinegar, salt, garlic, ginger, rice bran oil.  
 Net weight : 300 gm  
 MRP : Rs. 200/-  
 Name of individual : Niepukhrienuo Chadi  
 Village : Nerhema  
 Block : Chiephobozou



#### Organic Turmeric Powder

Product Details : Dried Organic Turmeric Powder  
 Net weight: : 250 gm  
 MRP : Rs. 150/-  
 Name of Group : Sede SHG  
 Village : Chiechama  
 Block : Chiephobozou



**King chilli pickle**

Product Details : Fresh King Chilli, Refined Oil, Salt, Pickle Spices, (100% organic & natural, No added chemical additives)  
 Net weight : 350 gm  
 MRP : Rs.350/-  
 Name of individual : Vitsonguno  
 Village : Jotsoma  
 Block : SechuZubza

**Daily's favourite**

Product Details : Fresh King Chilli, Mustard Oil, Salt, Pickle Spices, Natural and class II permitted preservative  
 Net weight: : 200 gm  
 MRP : Rs. 250/-  
 Name of individual : Thepfuletuoi  
 Village : Nerhema  
 Block : Chiephobozou

**Sami Krotho Handicrafts  
 (inside):Thevüroo  
 (outside): Merha**

Product Details : Thevüroo bamboo weaved chicken cage. Merha bamboo basket for storage  
 MRP : Thevüroo- Rs. 20/-  
 Merha- Rs. 200/-  
 Name of Group : Sami Krotho  
 Village : Nerhema  
 Block : Chiephobozou

**Sami Krotho Handicrafts  
 (inside): Khruda  
 (outside): Khorha**

Product Details : Khruda bamboo weaved basket cover Khorha bamboo basket for carrying.  
 MRP : Khruda- Rs. 100/-  
 Khorha- Rs. 400/-  
 Name of Group : Sami Krotho  
 Village : Nerhema  
 Block : Chiephobozou

**Sami Krotho Handicrafts**

Product Details : Zharü flatbamboo weaved tray  
 MRP : Rs. 600/-  
 Name of Group : Sami Krotho  
 Village : Nerhema  
 Block : Chiephobozou

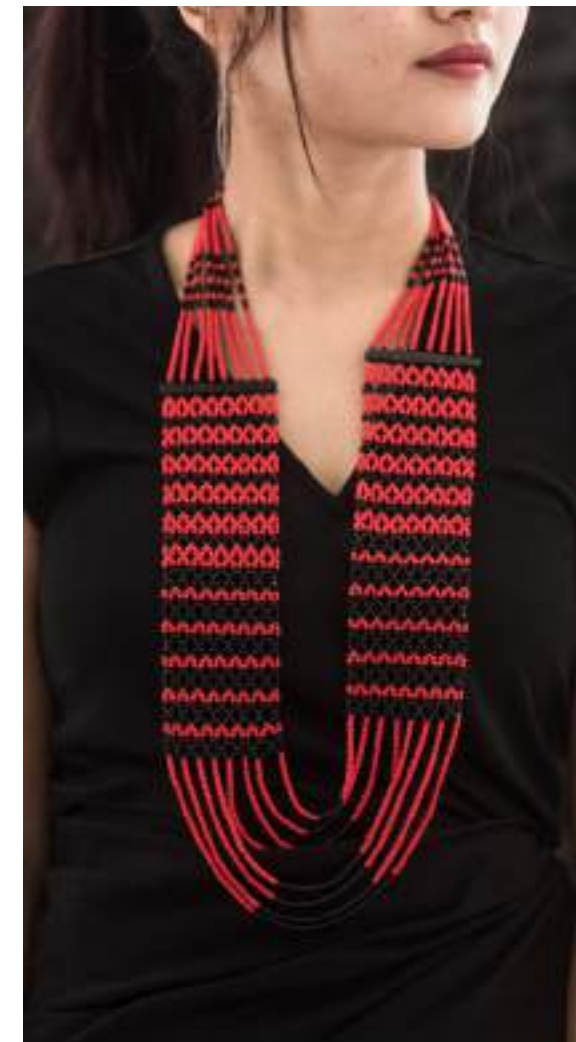
# Longleng Cluster

District Mission Management Unit (DMMU), NSRLM  
District Rural Development Agency  
High School Ward  
Longleng-798625  
Email: adpmlg@gmail.com



**Homei Phom Handmade**

Traditional mekhala/wrap around  
Product Details : Yarn and bamboo sticks  
MRP : Rs. 1500  
Yongphang village,  
Sakshi Block



**Chaula phom Handmade**

Beaded traditional necklace  
Product Details : Beads, button and thread  
MRP : Rs. 500  
Yangching village,  
Sakshi Block



**A Nangnyu phom Handmade**

Traditional bag  
Product Details : Plastic pipe, zip, muslin clothes for lining  
MRP : Rs. 800  
Yangching village, Sakshi Block



**A Nangnyu phom Handmade**

Beaded traditional necklace  
Product Details : Beads, button and thread  
MRP : Rs. 3000  
Yangching village,  
Sakshi Block



**Alem phom Handmade**

Beaded hairband  
Products Details : Beads and plastic hairband  
MRP : Rs. 150  
Yongphang village,Sakshi Block



**Panglih Phom Handmade**

Traditional necklace and earring  
Product details : Glass beads, thread,whiteharts,  
brass bells etc  
MRP : Rs. 500  
Bhumnyu village, Longleng Block



**K. Yashe Handmade**

Earing  
Products details : Glass beads  
MRP : Rs. 100  
Orangkong village,  
Longleng Block



**K. Yashe Handmade**

Earing  
Products details : Glass beads  
MRP : Rs. 100  
Orangkong village,  
Longleng Block



**Traditional necklace and earring**

Product details : Glass beads, thread, whiteharts,  
brass bells etc  
MRP : Rs. 1000  
Lakchem VLO, Yaongyimchen  
village,Longleng Block



**Traditional necklace and earing**

Product details : Glass beads, thread, whiteharts, brass bells etc  
 MRP : Rs. 2000  
 Lakchem VLO, Yaongyimchen village, Longleng Block



**Traditional necklace and earing**

Product details : Glass beads, thread, whiteharts, brass bells etc  
 MRP : Rs. 2000  
 Lakchem VLO, Yaongyimchen village, Longleng Block



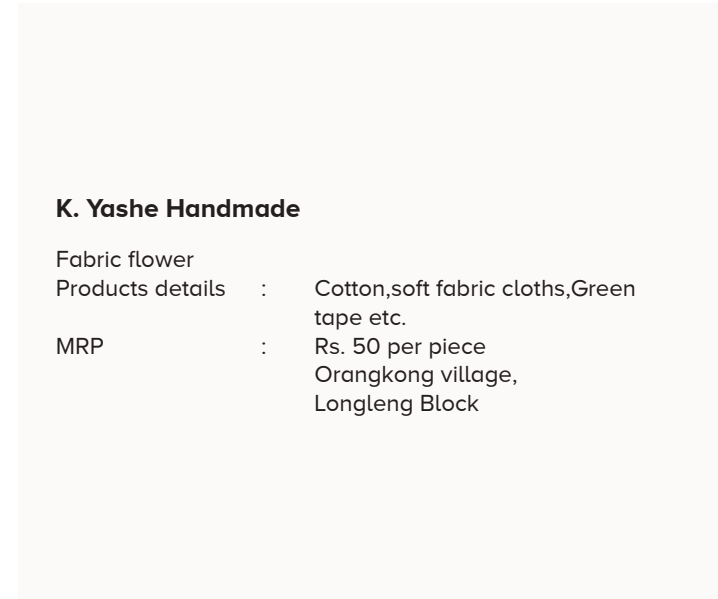
**Traditional necklace**

Product details : Beads, button and thread  
 MRP : Rs.3000  
 Lakchem VLO, Yaongyimchen village, Longleng Block



**Traditional necklace**

Product details : Glass beads, thread, whiteharts, brass bells etc  
 MRP : Rs. 2500  
 Lakchem VLO, Yaongyimchen village, Longleng Block



**K. Yashe Handmade**

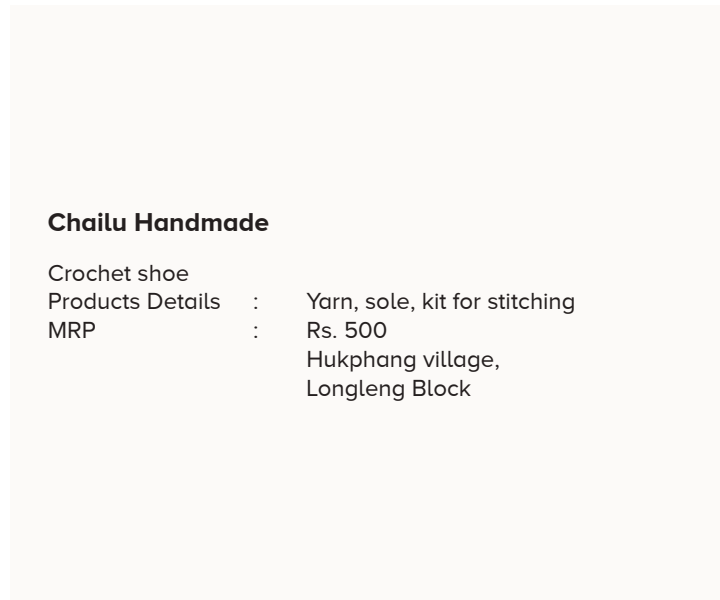
Fabric flower  
 Products details : Cotton, soft fabric cloths, Green tape etc.  
 MRP : Rs. 50 per piece  
 Orangkong village, Longleng Block





**Alemphom Handmade**

Crochet sandal  
 Products Details : Yarn and sole.  
 MRP : Rs. 250  
 Yongphang village, Sakshi Block



**Chailu Handmade**

Crochet shoe  
 Products Details : Yarn, sole, kit for stitching  
 MRP : Rs. 500  
 Hukphang village,  
 Longleng Block



**Turmeric Powder**

Ingredients : Raw organic Turmeric.  
 Net Weight : 25 g  
 MRP : Rs. 50  
 Lakchem VLO, Yaongyimchen village, Longleng Block



**Yonglom Food Products, Jack fruits chips**

Ingredients : Sliced Jackfruit, Salt and oil  
 Net Weight : 100 g  
 MRP : Rs. 50  
 Orangkong village, Longleng Block



**Yonglom Product, Basil Dried leaves**

Ingredients : Basil Leaves (sun dried)  
 Net Weight : 75 g  
 MRP : Rs. 50  
 Orangkong village, Longleng Block



**Yonglom Product, Roselle Dried leaves**

Ingredients : Roselle Flowers (sun dried)  
 Net Weight : 90 g  
 MRP : Rs. 50  
 Orangkong village, Longleng Block



**Yonglom Product, Roselle Juice**

Ingredients : Roselle flower,sugar, Citric acid, Potassiun Meta, added identical flavouring substances.  
 Net Weight : 150 ml  
 MRP : Rs. 50  
 Orangkong village, Longleng Block



**Yonglom Product, Green Chilly pickle**

Ingredients : Fresh green chilly, Bambooshoot, oil, salt  
 Net Weight : 100 g  
 MRP : Rs. 50  
 Orangkong village, Longleng Block

# Mokokchung Cluster

District Mission Management Unit (DMMU), NSRLM  
District Rural Development Agency  
Sangtemla Ward:Mokokchung-798601 Nagaland  
Email: adpmmkgnsrlm@gmail.com



## Szechuan pepper

Ingredients : Zanthoxylum RhestaRobox dried seeds.  
FSSAI : 21921030000033  
Net weight : 50g  
MRP : Rs. 70  
Tia Ajem SHG  
Khar village, Mangkolemba.



## Goose Berry Candy

Ingredients : Goose berry, Sugar  
FSSAI : 2192030000115  
Net weight : 350g  
MRP : Rs. 100  
Name : Bendanglila  
Khunentong SHG  
Chuchuyimpang village, Ongpangkong North.



## Ginger Jaggery Candy

Ingredients : Ginger, Jaggery, salt.  
FSSAI : 2192030000115  
Net weight : 20 pieces  
MRP : Rs. 50  
Name : Bendanglila  
Khunentong SHG  
Chuchuyimpang village, Ongpangkong North.



**Axone ginger pickle**

Ingredients : Dried axone, red chilli, oil, salt  
 FSSAI : 2192030000115  
 Net weight : 250g  
 MRP : Rs. 120  
 Name : Bendanglila  
 Khunentong SHG  
 Chuchuyimpang village,  
 Ongpangkong North.



**Liver Pickle**

Ingredients : Fried pork liver, gallbladder,  
 red chilli, vinegar, fermented  
 bamboo juice, lemon, oil, salt.  
 FSSAI : 2192030000115  
 Net weight : 250g  
 MRP : Rs.150  
 Name : Bendanglila  
 Khunentong SHG  
 Chuchuyimpang village,  
 Ongpangkong North.



**Green chilli pickle**

Ingredient : Green chilli, oil, spices, vinegar,  
 salt  
 FSSAI : 21921022000009  
 MRP : Rs.60  
 Net weight : 120g  
 Penzulong SHG  
 Chuchuyimlang village,  
 chuchuyimlang block



**Ali's Kitchen ( King chilli pickle)**

Ingredients : Fresh Naga Kingchilli, iodised salt, vegetable oil,  
 turmeric powder, mustard seeds, fenugreek & other  
 spices.  
 Net weight : 193g  
 MRP : Rs. 200  
 FSSAI : 21921030000096  
 Name : Alila  
 Onchena SHG, Ungma village, Ongpangkong North

**Ali's Kitchen (Tamarind Pickle)**

Ingredients : Tamarind, Oil, fennel, Turmeric Powder, Cumin,  
 Fenugreek, Salt, Chilli powder, Jaggery.  
 Net weight : 232g  
 MRP : Rs.80  
 FSSAI : 21921030000096  
 Name : Alila  
 Onchena SHG  
 Ungma village, Ongpangkong North

**Ali's Kitchen (Lemon Pickle)**

Ingredients : Garden lemon, Mustard seed, Asafoetida, shilli, salt,  
 fenugreek, and edible oil.  
 Net weight : 233g  
 MRP : Rs. 80  
 FSSAI : 21921030000096  
 Name : Alila  
 Onchena SHG  
 Ungma village, Ongpangkong North



**Ali's Kitchen ( Silk Worm)**

Ingredients : Silk worm, King chilli, oil, salt, bamboo shoot water  
 FSSAI : 21921030000096  
 MRP : Rs. 150  
 Net weight : 50g  
 Name : Alila  
 Onchena SHG  
 Ungma Village, Ongpangkong North



**Activated Charcoal Soap**

Ingredient list : Glycerin transparent soap base, Activated charcoal powder, olive oil, Aloe Vera, Honey, Vitamin E oil capsule.  
 Net weight : 80g  
 MRP : Rs. 100  
 Name : Marchila  
 Kingpins SHG  
 Sungratsu village, Kubolong

**Artisan body soap**  
 Ingredient list : Glycerin soap base, essential oil, dried luffa gourd plant.  
 Net weight : 135g  
 MRP : Rs. 50  
 Teroto Naro SHG  
 Longkong village, Chuchuyimlang



**Natural Loofah**  
 Ingredients : Dried Luffa Gourd  
 MRP : Rs. 50  
 Teroto Naro SHG  
 Longkong village, Chuchuyimlang





**Earrings**

MRP : Rs. 120-130  
 Fifteen SHG  
 Mopungchuket village,  
 Kubolong

**i) Becky's Mom (Pot Holder)**

MRP : Rs. 80  
 Name : Kilemla Ao  
 Tapensa SHG  
 Mopungchuket village,  
 Kubolong

**ii) Becky's Mom (Face Mask)**

MRP : Rs. 180  
 Name : Kilemla Ao  
 Tapensa SHG  
 Mopungchuket village,  
 Kubolong

**iii) Becky's Mom (Refrigerator cover)**

MRP : Rs. 400  
 Name : Kilemla Ao  
 Tapensa SHG  
 Mopungchuket village,  
 Kubolong



**Apron, Pot holder, and Hand towel set**

MRP : Rs. 300  
 Name : Sentisola  
 Lenchiren SHG  
 Chuchuyimlang village, chuchuyimlang block

# Mon Cluster

District Mission Management Unit (DMMU), NSRLM  
District Rural Development Agency  
Mon-798621, Nagaland  
Email: adpmmon@gmail.com



#### Seeds Beaded Mekhala Set

MRP : Rs. 10,000  
Orchids SHG, Shangnyu  
Village, Mon Block

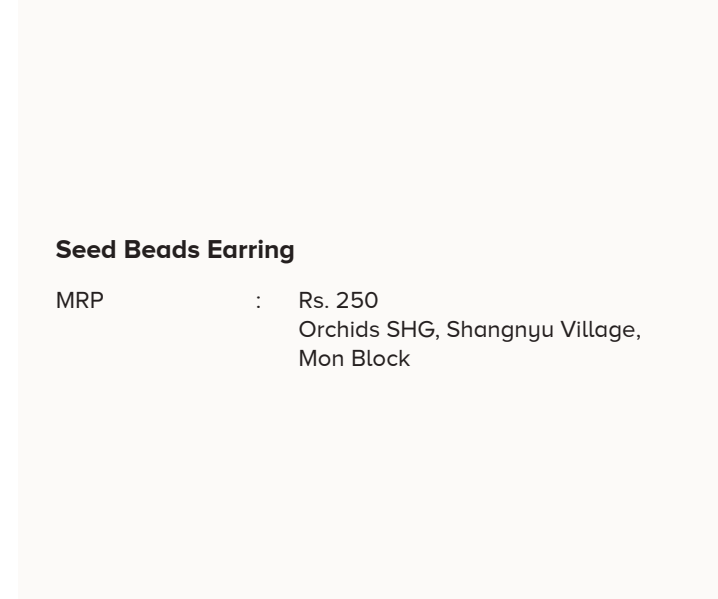
#### Traditional Mekhala Set

MRP : Rs. 4,500  
Orchids SHG, Shangnyu  
Village, Mon Block



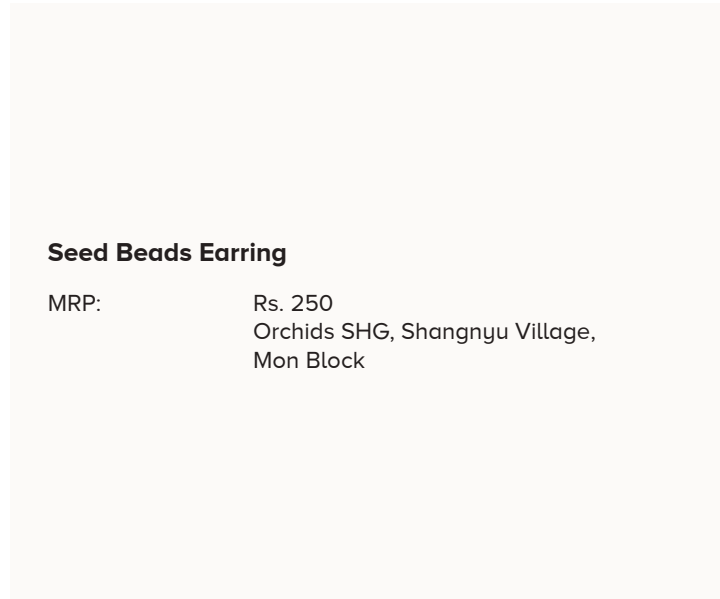
**Seed Beads Earring**

MRP : Rs. 250  
Orchids SHG, Shangnyu Village,  
Mon Block



**Seed Beads Earring**

MRP : Rs. 250  
Orchids SHG, Shangnyu Village,  
Mon Block



**Seed Beads Earring**

MRP: Rs. 250  
Orchids SHG, Shangnyu Village,  
Mon Block



**Seed Beads Earring**

MRP : Rs. 300  
Orchids SHG, Shangnyu Village,  
Mon Block



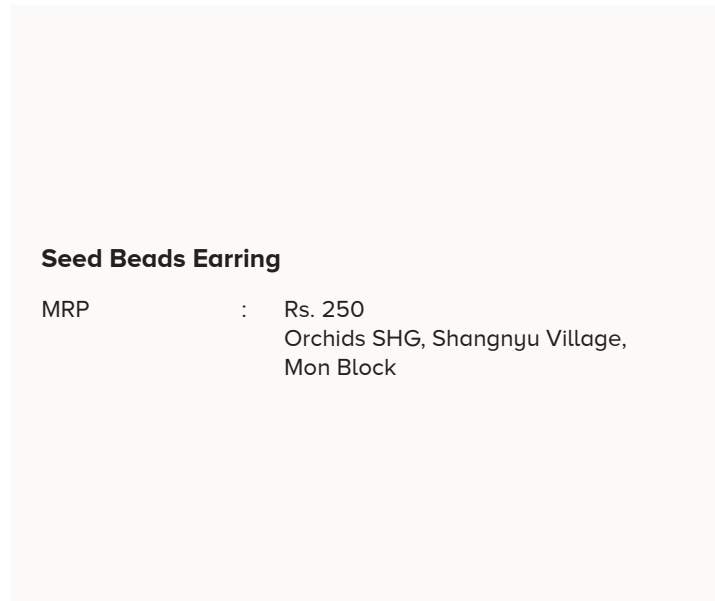
**Seed Beads Earring**

MRP : Rs. 250  
Orchids SHG, Shangnyu Village,  
Mon Block



**Beaded Mekhala Set**

MRP : Rs. 6,000  
Kahken SHG,  
Chingkao Chingha Village,  
Chen Block



**Seed Beads Earring**

MRP : Rs. 250  
Orchids SHG, Shangnyu Village,  
Mon Block



**Mekhala**

MRP : Rs. 2,000  
Namjong SHG,  
Chen Wetnyu Village, Chen Block



**Mekhala**

MRP : Rs. 2,000  
Namjong SHG,  
Chen Wetnyu Village,  
Chen Block



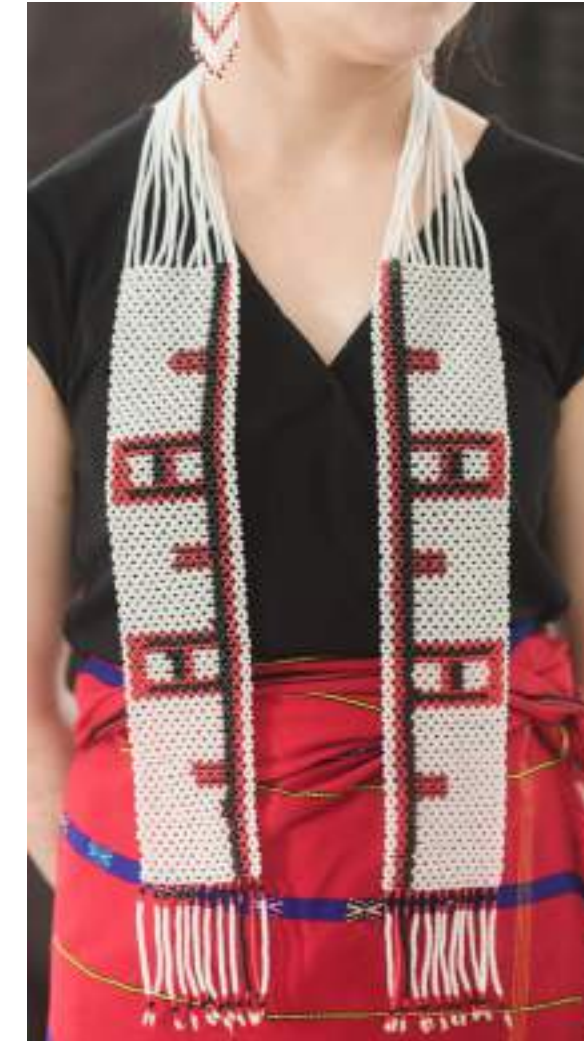
**Beaded Mekhala set**

MRP : Rs. 2,000  
Kahken SHG, Chingkao Chingha Village,  
Chen Block



**Beaded Necklace**

MRP : Rs. 3,000  
Kahken SHG,  
Chingkao Chingha Village,  
Chen Block



**Beaded Necklace**

MRP : Rs. 2,000  
Kahken SHG,  
Chingkao Chingha Village,  
Chen Block



**Beaded Necklace**

MRP : Rs. 3,000  
Kahken SHG,  
Chingkao Chingha Village,  
Chen Block



**Beaded Sash**

MRP : Rs. 3,000  
Kahken SHG,  
Chingkao Chingha Village,  
Chen Block



**Beaded Sash**

MRP : Rs. 3,000  
Kahken SHG,  
Chingkao Chingha Village,  
Chen Block



**Konyak Traditional Bag**

MRP : Rs. 350  
Namjong SHG,  
Chen Wetnyu Village,  
Chen Block



**Beads Keychain**

MRP : Rs. 400  
Orchids SHG, Shangnyu Village, Mon Block

# Peren Cluster

District Mission Management Unit (DMMU), NSRLM  
Old Market Colony Jalukie town  
Jalukie -797110, Peren Nagaland  
Email: adpmpere@gmail.com



## Traditional Zeliang Muffer for men

Men Muffer : 2-ply color yarn  
MRP : Rs. 700  
Chun Chun SHG, Samziuram Village, Peren

## Traditional Zeliang Muffer for men

Men Muffer : 2-ply color yarn  
MRP : Rs. 700  
Chun Chun SHG, Samziuram Village, Peren



**Traditional Zeliang shawl for men**

Men Muffler : 2-ply color yarn  
 MRP : Rs. 4000  
 Chun Chun SHG, Samziuram Village, Peren



**Traditional Zeliang Tie for men**

Men Tie : 2-ply color yarn  
 MRP : Rs. 500  
 Chun Chun SHG, Samziuram Village, Peren



**Traditional Zeliang Women shawl & Mekhela Suit**

Women Shawl and mekhela : Thailand color yarn  
 MRP : Rs. 7000  
 Chun Chun SHG, Samziuram Village, Peren



**Traditional Rongmei Mekhela**

Women mekhela : Yarn 2-ply and Thailand  
 MRP : Rs. 10,000  
 Daithao SHG, Samziuram Village, Peren



**Traditional Zeliang Women Earring and Necklace**

Earring : Handmade color beaded  
 MRP : Rs. 100  
 Necklace : Handmade color beaded  
 MPR : Rs. 700  
 Chun Chun SHG, Samziuram Village, Peren



**Cushion Cover**

material used : 100% cotton dye handwoven  
 Weight : 165gm  
 Size : 16/16  
 MPR : Rs. 730  
 CLBRC, Kedime Colony, Peren



**Washable Sanitary Pad**

Sanitary Pad : 100% cotton handwoven Re-useable  
 (Fordable & All in one)  
 Weight : 40 gm  
 Size : Medium  
 MRP : Rs. 150  
 CLBRC, Kedime Colony, Peren



**Potli Bag**

100% cotton Dye handwoven  
 Weight : 65 gm  
 Size : 6/8  
 MRP : Rs. 420  
 CLBRC, Kedime Colony, Peren



**Baby Diaper**

100% cotton Water proof Re-useable Skin friendly(0-6 months & 6 months- 2 Years Old)  
 Weight : 100/110 gm  
 Size : Small/Medium  
 (14.5 lengths, 18 waists/16.5 lengths, 22 waists)  
 MRP : Rs. 350/450  
 CLBRC, Kedime Colony, Peren



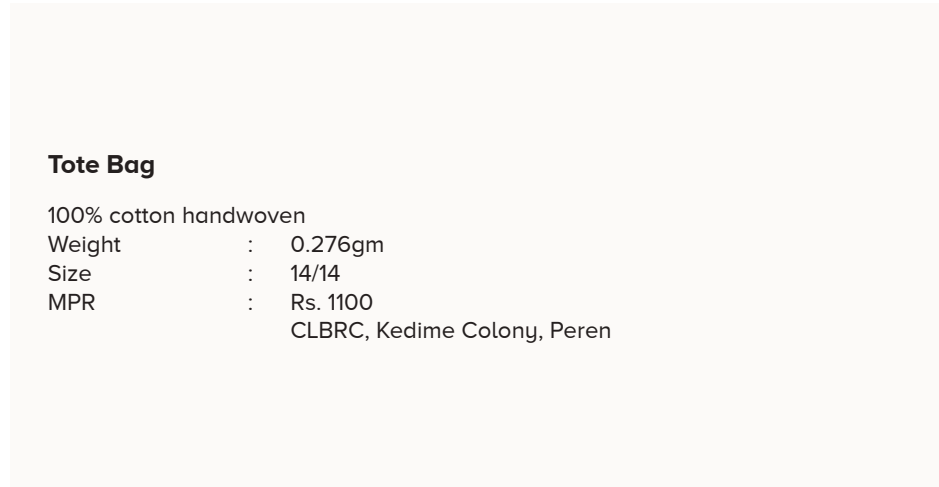
**Mini Tote Bag**

100% cotton handwoven  
 Weight : 112gm  
 Size : 11/10  
 MRP : Rs. 700  
 CLBRC, Kedime Colony, Peren



**Basket**

Material used : Swastic Cane Wire  
 Weight : 600 gm  
 Size : Medium  
 MRP : Rs. 500  
 Lungan SHG, Mhainamtsi Village, Peren



**Tote Bag**

100% cotton handwoven  
 Weight : 0.276gm  
 Size : 14/14  
 MPR : Rs. 1100  
 CLBRC, Kedime Colony, Peren



**Artificial Flower**

Material used : Satin cloth, green tape, thread, glue, glue gun, cable wire, aluminium tar, ready-made leaves, candlestick, plier, plastic pipe, flower vase and wrapping paper.  
 Type of flower : Pink Cherry, Purple Flower  
 MRP : Rs. 200 per stick  
 Evershine SHG, Mhainamtsi Village, Peren

# Phek Cluster

District Mission Management Unit (DMMU), NSRLM  
District Rural Development Agency  
Phek-797108, Nagaland  
Email: adpmphek@gmail.com



## MORTAR and PESTLE

Product Details : PINE WOOD  
MRP : Rs 400  
Name of SHG : KUZUVE  
Village : KHUZA  
Block : PHEK



## Tray

Product Details : PLASTIC FIBER  
MRP : Rs 150  
Name of SHG : KUNU  
Village : KHUZA  
Block : PHEK



## Dried Large Cardamom

Enterprise Name : Phek District Large Cardamom Producer Company  
Product Category : Process: Sun Dried  
FSSAI : 11917009000553  
MRP : Rs. 200  
Net Weight : 250 gram  
SHG : Lirhukro - II  
Village : Zapami  
Pfutsero : Block



**BASKET**

Enterprise Name : Achu Weaves  
 Material Use : Plastic Stip  
 MRP : Rs.250  
 SHG : Gyasu Self Help Group  
 Village : Lasumi  
 Block : Pfutsero

**BASKET**

Product Details : PLASTIC FIBER  
 MRP : Rs. 300 (Big Size) Rs 150 (Small Size)  
 Name of SHG : KUNU  
 Village : KHUZA  
 Block : PHEK

**PURSE**

PRODUCT DETAILS : 2PLY THREAD, ZIPPER AND COTTON CLOTH FOR UNDERNEATH.  
 MRP : Rs.200 each  
 VILLAGE : KHUZA  
 BLOCK : PHEK



**TODDLER SOCKS**

Product Details : 2 PLY  
 MRP : Rs. 50 Per Pair  
 Name of SHG : LUSALA  
 Village : KHUZA  
 Block : PHEK



**Amiathsii (Official Pochury Mens Shawl)**

Product Details : This shawl is made out of cotton, 2ply.  
 MRP : Rs. 2500  
 Name of SHG : Lona Refü  
 Name of VLO : Luoshüthorü  
 Village : Meluri  
 Block : Meluri

# Tuensang Cluster

District Mission Management Unit (DMMU), NSRLM  
D.C Complex  
Tuensang - 798612  
Email: adpmtuensang@gmail.com



## Yimkhiung Alongzah women mekhala

Product details : Handwoven using Doli  
yarn.  
MRP : Rs. 4000/-  
SHG name : Mungtsu SHG, Sangphur,  
Shamator.

## Alongzah chocker combo necklace.

Product details : Seed beads, thread  
MRP : Rs. 2000/-  
SHG name : Lundun SHG, Shamator  
HQ, Shamator.



#### Yimkhung necklace

Product details : Seed beads, thread.  
MRP : Rs. 1500/-  
SHG name : Lundun SHG, Shamator  
HQ, Shamator.

#### Kejingberu choker combo necklace.

Product details : Seed beads, thread  
MRP : Rs. 2000/-  
SHG name : Lundun SHG, Shamator  
HQ, Shamator.



#### Beaded traditional women's shawl

Product details : Beads, thread.  
MRP : Rs. 2000/-  
SHG name : Chungli SHG, Holongba  
village, Longkhim.

#### Yimkhung Men Muffer

Product details : Doli thread, shells.  
MRP : Rs. 1500/-  
SHG name : Wongtsu SHG, Shangphur  
HQ, Shamator.



#### Hornbill necklace

Product details : Glass beads, thread.  
MRP : Rs. 1000/-  
SHG name : Lundun SHG, Shamator  
HQ, Shamator.



#### Traditional Yimkhung tie

Product details : Polyester thread  
MRP : Rs. 350/-  
SHG name : Confu SHG, Yakor village,  
Shamator.



#### Mekhala/Wrap around

Product details : Cotton thread and Rayon  
thread for patterns/design  
MRP : Rs. 3000/-  
Name : M.Lema  
SHG name : Jakchiyu SHG, Longra  
village, Noksen.



#### Mekhala/Wrap around

Product details : Cotton thread and Rayon  
thread for patterns/design  
MRP : Rs. 3500/-  
Name : Moanungla  
SHG name : Mimano SHG, Noksen  
village, Noksen



**Traditional stinging nettle bag.**

Product details : fibre extracted from Urtica dioica (stinging nettle)  
 MRP : Rs. 900/-  
 SHG name : OB SHG, Choklangan, Noklak



**Traditional bag**

Product details : Stinging nettle and Cotton thread  
 MRP : Rs. 500/-  
 SHG name : Vedai SHG, Pathso Nokeng, Panso.



**Chang shoulder bag.**

Product details : Cotton thread  
 MRP : Rs. 500/-  
 Name : Yangmai  
 SHG name : Sanou SHG, Kumpang village, Noksen.



**Macrame bag**

Product details : Macrame thread/Micron thread  
 MRP : Rs. 400/-  
 SHG name : Nguchicheh SHG, Sangsomong village, Longkhim.



**Hand woven bag**

Product details : Doli thread  
 MRP : Rs. 600/-  
 SHG name : Luje SHG, Lirise Village, Longkhim.



**Macrame mini bag**

Product details : Macrame thread/Micron thread  
 MRP : Rs. 100/-  
 SHG name : Nguchicheh SHG, Sangsomong village, Longkhim.



### Bamboo hairclip

Product details : Bamboo  
 MRP : Rs. 30/-  
 SHG name : Zopong SHG, Pathso village, Panso



### Foxtail millet

Net weight : 400gms  
 MRP : Rs. 100/-  
 SHG name : Kheanto SHG, Chessore village, Chessore.



### Banana chips

Ingredients : Raw banana, Tumeric, Salt, Coconut Oil  
 MRP : Rs. 100/-  
 SHG name : Sangmei SHG, Sangsangyu Village, Sangsangyu.

### Aloe vera/Lemon handmade soap.

Product details : Glycerin soap base, Honey, Colour, Fragrance, Vitamin E, Aloe vera/Lemon extract.  
 MRP : Rs. 70/-  
 Name : Asula  
 SHG name : Diki SHG, New Tsaru village, Chare.



### Green chilly pickle.

Ingredients : Green chillies, Ginger, Mustard seeds, Nigella seeds, Fennel seeds, Black pepper, Garlic, Black sesame seeds, Red chilly powder, Lemon, White vinegar, Mustard oil, Salt.  
 MRP : Rs. 150/-  
 Name : M. Sepongkhumla  
 SHG name : Sangku Laiket SHG, Tuensang village, Sangsangyu.





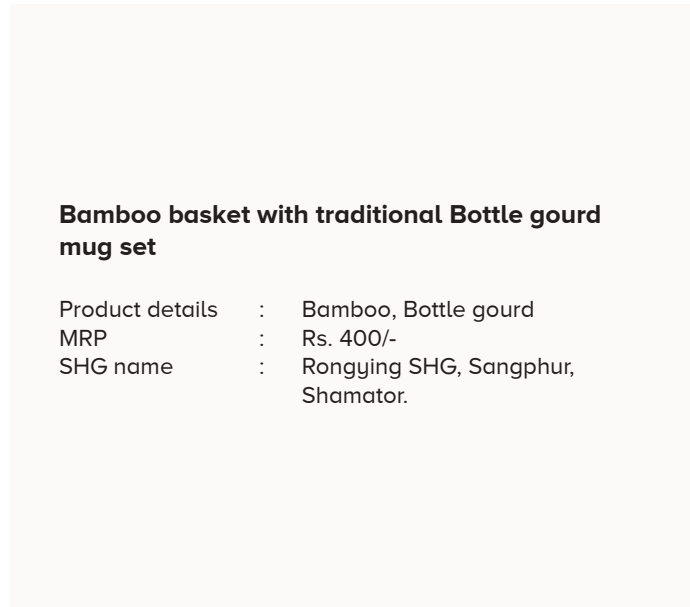
#### Traditional Horn mug

Product details : Mithun horn and cane  
MRP : Rs. 6500/-  
SHG name : Thaiokeng Khaio SHG, Noklak village, Noklak.



#### Traditional woven bottle.

Product details : Bottle gourd and cane  
MRP : Rs. 1300/-  
SHG name : Thaiokeng Khaio SHG, Noklak village, Noklak.



#### Bamboo basket with traditional Bottle gourd mug set

Product details : Bamboo, Bottle gourd  
MRP : Rs. 400/-  
SHG name : Rongying SHG, Sangphur, Shamator.



#### Bamboo woven bottle with sling

Product details : bamboo  
MRP : Rs. 900/-  
SHG name : Sobe SHG, Hakchang village, Sangsangyu

# Wokha Cluster

District Mission Management Unit (DMMU), NSRLM  
District Rural Development Agency  
Wokha-797111, Nagaland  
Email: adpmwokha@gmail.com



## Passion Fruit Juice

Ingredients : Passion fruit juice, Water, Citric acid, Potassium.  
Net Quantity : 700 ml  
MRP : Rs.130  
Phon-Ronka SHG, Wokha Village, Wokha



### Mungmungthi Local Wine

Ingredients : Mungmungthi (Prunus nepalensis),  
Yeast, Citric acid, sugar.  
Net Quantity : 750 ml  
MRP : Rs.400  
Nzanti SHG, Yanthamo Village,  
Chukitong



### Black Sesame Oil

Ingredients : Black sesame seeds  
Net Quantity : 300 ml  
MRP : Rs.180  
Kitong SHG, Akuk Old Village,  
Changpang



### Jaggery

Ingredients : Sugar cane juice  
Net Weight : 750 gms  
MRP : Rs.250  
Kitong SHG, Akuk Old Village,  
Changpang

### Beef Pickle

Ingredients : Beef meat, Salt, Chillies, garlic,  
Ginger, Edible oil  
Net Weight : 100 gms  
MRP : Rs.140  
Myanta SHG, Akuk Village,  
Changpang

### Chicken Pickle

Ingredients : Chicken meat, Salt, Chillies, Garlic,  
Ginger, Edible oil.  
Net Weight : 100 gms  
MRP : Rs.130  
Myanta SHG, Akuk Village,  
Changpang





**Decorative Items-Handsewn Woolen Flowers**

Materials : Yarn, Steel wire, Sewing wool, Fibre  
 Net Quantity : Bunch  
 MRP : Rs.1600  
 Unity SHG, Nungying Village, Chukitong



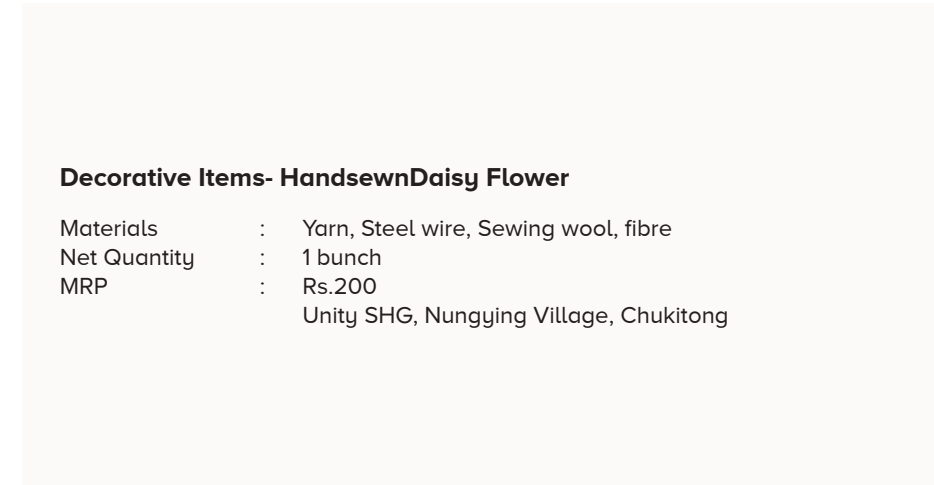
**Decorative Items-Cactus Flower**

Materials : Yarn, Steel wire, Sewing wool, Fibre  
 Net Quantity : 1 Cactus with vase  
 MRP : Rs.200  
 Unity SHG, Nungying Village, Chukitong



**Decorative Items- Handsewn Rose Flowers**

Materials : Yarn, Steel wire, Sewing wool, Fibre  
 Net Quantity : 3 piece  
 MRP : Rs.120 per stem  
 Unity SHG, Nungying Village, Chukitong



**Decorative Items- Handsewn Daisy Flower**

Materials : Yarn, Steel wire, Sewing wool, fibre  
 Net Quantity : 1 bunch  
 MRP : Rs.200  
 Unity SHG, Nungying Village, Chukitong





**Decorative Items- Handsewn Red Flower**

Materials : Yarn, Wood, Sewing wool  
 Net Quantity : 4 stems  
 MRP : Rs.40 per stem  
 Unity SHG, Nungying Village, Chukitong

**Decorative Items- Handsewn Lavender**

Materials : Yarn, Steel wire, Sewing wool, fibre  
 Net Quantity : 4 stems  
 MRP : Rs.50 per stem  
 Unity SHG, Nungying Village, Chukitong



**Decorative Items- Handsewn Lily of the Valley Flower**

Materials : Yarn, Steel wire, Sewing wool, fibre  
 Net Quantity : 2 Bunches  
 MRP : Rs.200 per bunch  
 Unity SHG, Nungying Village, Chukitong



**Tote Bag (Maroon and grey)**

Materials : Cotton canvas, Coats threads  
 Net Quantity : 1  
 MRP : Rs.400  
 ECO SHG, Thillong Village, Wokha

**Tote Bag (White and blue)**

Materials : Cotton canvas, Coats threads  
 Net Quantity : 1  
 MRP : Rs.400  
 ECO SHG, Thillong Village, Wokha

# Zunheboto Cluster

District Mission Management Unit (DMMU), NSRLM  
District Rural Development Agency  
Zunheboto-798620, Nagaland  
Email: adpmzbto@gmail.com



## WILD APPLE CANDY

INGREDIENTS : WILD APPLE, SUGAR, WATER.  
MRP : RS. 50  
NIKIVIPU SHG  
GHUKIYE, SATAKHA BLOCK.



## GINGER POWDER AND ORGANIC COFFEE

INGREDIENTS : (A) GINGER (B) FRESH COFFEE  
MRP : (A) RS. 40 (B) RS.140  
@BEST BUY PRODUCT  
ZUNHEBOTO



## DRIED ELAEOCARPUS SERRATUS (SHEKUTHI)

INGREDIENTS : SHEKUTHI, SALT, WATER.  
MRP : RS. 50  
NIKIVIPU SHG  
GHUKIYE, SATAKHA BLOCK.



**AKILITO KIVI CANDY**

INGREDIENTS : KIVI, SUGAR, ICING POWDER, WATER.  
 MRP : RS.120  
 NILOJI SHG  
 TICHIPAMI, SURUHUTO BLOCK.

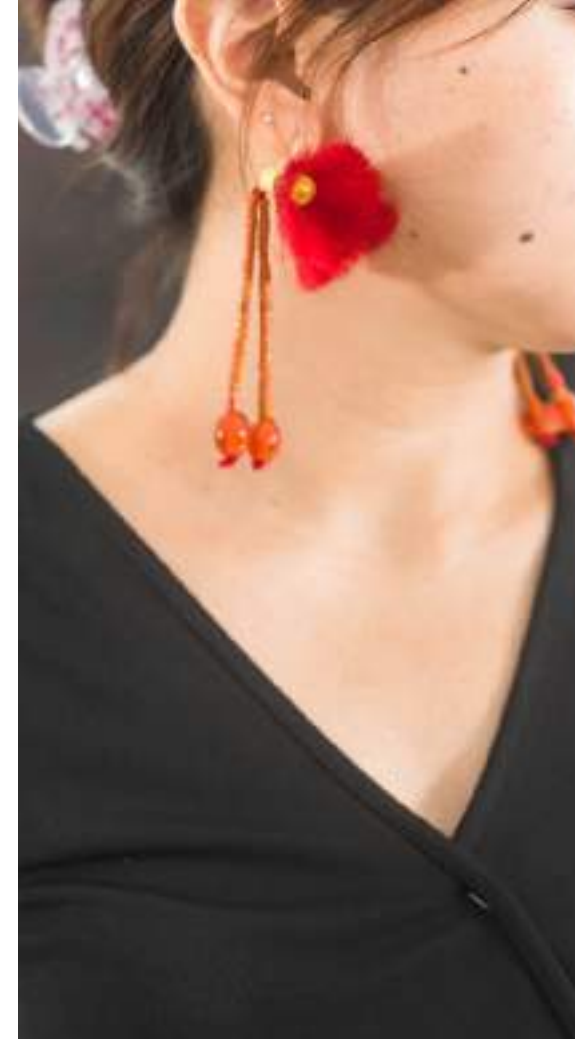


**GOOSEBERRY CANDY**

INGREDIENTS : GOOSEBERRY, SUGAR, WATER.  
 MRP : RS. 50  
 NIKIVIPU SHG  
 GHUKIYE, SATAKHA BLOCK.

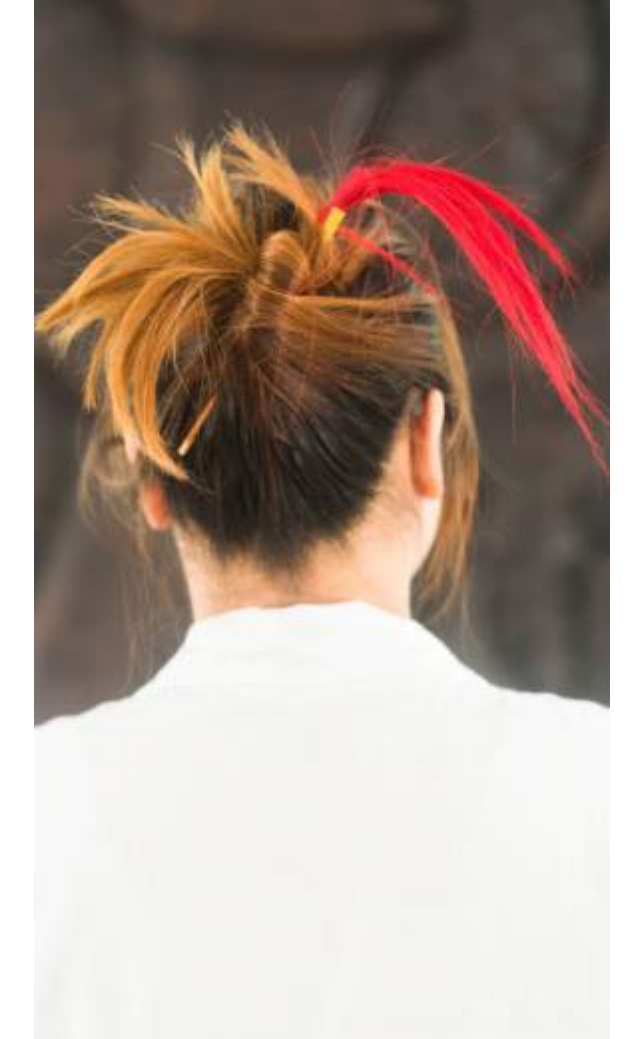
**AXONE PICKLE**

INGREDIENTS : SMOKED AXONE, GINGER, GARLIC, SICHUAN PEPPER, KING CHILLY.  
 MRP : RS 150  
 TSUNI KUPU VLO.  
 TOKIYE BLOCK.



**TRADITIONAL SUMI ORNAMENTS**

PRODUCT DETAILS : BEADS, TASSELS, THREADS, WOODEN PIN.  
 MRP : (A) Rs. 300 (B). RS. 400 (C). RS. 300  
 NAME : MERRY  
 SHALOM SHG  
 LUVISHE NEW, TOKIYE BLOCK.





**SUMI TRADITIONAL MEKHELA**

PRODUCT DETAILS : COTTON YARN, POLYESTER THREADS.  
MRP : (A). RS. 4000 (B). RS. 3800 (C). RS. 3700  
AZAKIVI SHG  
SHOIPU , SATAKHA BLOCK.

To reduce poverty, by enabling the poor households to access gainful self-employment and skilled wage employment opportunities resulting in appreciable improvement in their livelihoods on a sustainable basis through building strong and sustainable grassroots "institutions of the poor"

*Empowering Women, Engaging Communities.*

Printed @  logic Art



0 36000 29145 2